

## CV 37 AF - AIRFLOW



STEELWORKS AND FOUNDRIES



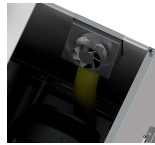
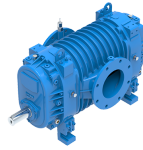
CEMENT



POWER PLANTS



HEAVY INDUSTRY



- ✓ Complete steel construction
- ✓ Sturdy vacuum cleaner for intensive use
- ✓ Powerful lobe pump with electric motor

- ✓ High performances and long-lasting equipment
- ✓ Low noise level
- ✓ Easy and safe to maintain



### SUCTION UNIT

Voltage	V - Hz	400 - 50 3~
Power	kW	37
Electrical protection	IP	55
Max water lift	mmH <sub>2</sub> O	5.000
Max air flow	m <sup>3</sup> /h	2.000
Suction inlet	mm	140
Safety filter		70.000 - M
Cooling filter	cm <sup>2</sup> - Classe	70.000 - M



### VOLUME

Dimensions	cm	114x124x147h
Weight	kg	750



## SUCTION UNIT

The suction unit is provided with a volumetric vacuum pump with tri-lobe rotors which can reach very high airflow and waterlift levels

A safety filter guarantees the maximum protection for both motor and pump

The unit must be coupled with a filter hopper

A soundproof painted steel cabin with cooling fan protects the pump from external agents



## OPTIONALS

- ✓ POWER CABLE AND PLUG
- ✓ CONTROL PANEL WITH PLC FOR MANAGEMENT OF EXTERNAL DEVICES (FILTER CLEANING CONTROL, PROBES, VALVES, ETC)