

352 DS AIR 2V - AIR POWERED



FOOD INDUSTRY



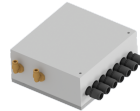
SHIPYARDS



CHEMICAL-PHARMACEUTICAL



METALWORKING



- ✓ Complete steel construction
- ✓ Extractable collection container with optional use of disposable bags
- ✓ Compact and mobile
- ✓ High filtration efficiency
- ✓ Compressed air supply through a double Venturi suction unit
- ✓ Integrated automatic filter cleaning system



SUCTION UNIT

Air supply	l / min	3000
Air supply pressure	bar	6
Max water lift	mmH ₂ O	4180
Max air flow	m ³ /h	300
Suction inlet	mm	80
Noise level (EN ISO 3744)	dB(A)	73



FILTER UNIT

Filter Type	Star
Cleaning system	Manual



COLLECTION UNIT

Discharge system	
------------------	--



VOLUME

Dimensions	cm	55x62x119h
Weight	kg	49



SUCTION UNIT

The suction is provided by two venturi compressed-air-driven suction units, protected inside a strong steel chassis, which contains also sound absorbing material to minimize noise during service. The suction is developed by a venturi-type vented suction unit, protected inside a solid steel head, containing sound absorbing material that minimizes noise during service.

The head includes a pressure and a vacuum gauge, in order to detect the clogging of the filter



FILTER UNIT

The large surface star filter, located inside the filter stainless steel chamber, is made of polyester and provides high resistance against clogging and passage of fine dust.

It is possible to clean the filter using an integrated mechanical system: an external lever shakes the filter vertically and enables to clean the filter thoroughly and safely, maintaining constant suction performance and preventing any dispersion of dust in the environment.



COLLECTION UNIT

The vacuumed material is collected into a wheeled steel detachable container, which can be extracted for easy disposal and can be used with optional disposable bags, for safer and handier disposal.



OPTIONALS

- ✓ FILTER FOR FINE DUST - CLASS M
- ✓ ABSOLUTE HEPA FILTER /H14
- ✓ ANTISTATIC FILTER CLASS M
- ✓ ANTISTATIC FILTER CLASS L
- ✓ PTFE COATED FILTER CLASS M
- ✓ HEAT RESISTANT FILTER (UP TO 250° CELSIUS)
- ✓ STAINLESS STEEL COLLECTION TANK
- ✓ STAINLESS STEEL TANK AND FILTER CHAMBER
- ✓ EARTH GROUNDING