



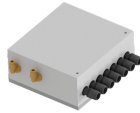
452 AIR - AIR POWERED



SHIPYARDS



CHEMICAL-PHARMACEUTICAL



- ✓ Complete steel construction
- ✓ Extractable collection container with optional use of disposable bags
- ✓ Compact and mobile
- ✓ High filtration efficiency
- ✓ Large surface antistatic filter
- ✓ Low noise level
- ✓ Easy to handle
- ✓ Compressed air supply through a single Venturi suction unit



SUCTION UNIT

| | | |
|---------------------------|--------------------|-----------------------|
| Air supply | nlt / min | 729 (43) - 1.458 (87) |
| Air supply pressure | bar | 6 |
| Ø Air supply hose | mm | 12 |
| Max water lift | mmH ₂ O | 3.700 |
| Max air flow | m ³ /h | 150 - 300 |
| Noise level (EN ISO 3744) | dB(A) | 68 |
| Suction inlet | mm | 80 |



FILTER UNIT

| | | |
|-----------------------|---------------------|-------------------|
| Filter Type | | Star |
| Surface - Diameter | cm ² -mm | 20.000 - 420 |
| Material - Efficiency | IEC 60335-2-69 | Polyester - ANT M |
| Cleaning system | | Manual |
| Secondary filter | | HEPA |



COLLECTION UNIT

| | | |
|----------|---|----|
| Capacity | l | 45 |
|----------|---|----|



VOLUME

| | | |
|------------|----|------------|
| Dimensions | cm | 58x63x119h |
| Weight | kg | 46 - 49 |



SUCTION UNIT

The head includes a pressure and a vacuum gauge, in order to detect the clogging of the filter

The suction is provided by a venturi compressed-air-driven suction unit, protected inside a strong steel chassis, which contains also sound absorbing material to minimize noise during service. The suction is developed by a venturi-type vented suction unit, protected inside a solid steel head, containing sound absorbing material that minimizes noise during service.



FILTER UNIT

An antistatic polyester cartridge filter is placed inside the steel filter chamber. This filter protects the suction unit by preventing any spark which might be caused by electrostatic discharge. A HEPA filter is included as standard (99,995% on 0,18 micron, class H) which holds the finest dusts and guarantees the cleanliness of the leaving air.



OPTIONALS

- ✓ ABSOLUTE HEPA FILTER /H14
- ✓ PTFE COATED FILTER CLASS M
- ✓ HEAT RESISTANT FILTER (UP TO 250° CELSIUS)
- ✓ STAINLESS STEEL COLLECTION TANK
- ✓ STAINLESS STEEL TANK AND FILTER CHAMBER
- ✓ CYCLONE FOR FILTER PROTECTION