



# DHV 45 HV HOPPER - HIGH VACUUM



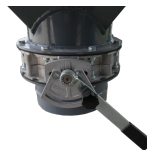
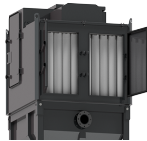
STEELWORKS AND FOUNDRIES



CEMENT



POWER PLANTS



- ✓ Unit for localized discharge
- ✓ High efficiency filtration
- ✓ Integrated automatic filter cleaning system
- ✓ Discharge system by means of a valve
- ✓ Sturdy vacuum cleaner for intensive use
- ✓ Low noise level
- ✓ Powerful lobe pump with electric motor
- ✓ Great autonomy of the system
- ✓ High performances and long-lasting equipment

## SUCTION UNIT

Voltage	V - Hz	400 - 50
Power	kW	45
Electrical protection	IP	55
Max water lift	mmH <sub>2</sub> O	8500
Max air flow	m <sup>3</sup> /h	1700
Suction inlet	mm	140

## FILTER UNIT

Filter Type	30 Sleeves	
Surface - Diameter	cm <sup>2</sup> -mm	160.000 - 120
Material - Efficiency	IEC 60335-2-69	Ant Polyester - M PTFE
Cleaning system	Automatic	
Secondary filter	Safety cartridge	
Surface	cm <sup>2</sup>	70.000

## COLLECTION UNIT

Capacity	l	1000
----------	---	------

## VOLUME

Dimensions	cm	168x160x356h
Weight	kg	2260

COPYRIGHT © 2023 DELFIN S.R.L. ALL RIGHTS RESERVED  
COPYRIGHT © 2023 DELFIN S.R.L. TUTTI I DIRITTI RISERVATI



## SUCTION UNIT

The suction unit is provided with a volumetric vacuum pump with tri-lobe rotors and lateral injection cooling system. This pump can reach very high airflow and waterlift levels  
A safety filter guarantees the maximum protection for both motor and pump  
The electrical panel is suitable for remote control and a push-button is installed on the chassis as standard



## FILTER UNIT

2 sets of filtering sleeves work continuously and alternatively. Doing so, they guarantee the maximum filtration efficiency and protection for the motor  
The filter is cleaned by an automatic system with backwash of the chambers. Compressed air is provided by an onboard compressor.



## COLLECTION UNIT

Integrated butterfly valve for discharge  
The material is safely and quickly discharged by means of a lever  
The unit is manufactured with thick painted steel for improved sturdiness and long-lasting lifetime



## OPTIONALS

✓ POWER CABLE AND PLUG