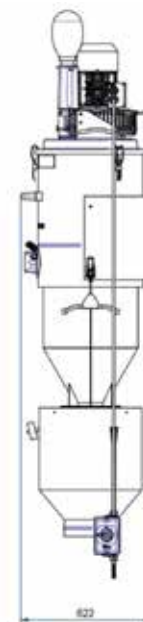
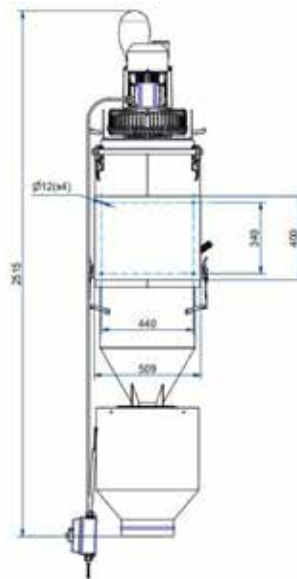


AS FIXE

WALL-MOUNTED INDUSTRIAL VACUUM CLEANER FOR LOCALIZED DISCHARGE



Filter category:



FEATURES

- Collection and localized discharge of material
- Mounted on the wall or on a steel structure (optional)
- Complete painted steel construction
- Manual filter cleaning system
- Localized discharge of material

All data mentioned in this document may change without notice. All data contained in this document is subject to change without notice.

DELFIN
FOR A DUST-FREE WORLD
www.delfinvacuums.com
delfin@delfinvacuums.it

TECHNICAL DATA

 OPTIONAL

		ASFIXE-001
Voltage	V	400
Power	kW	3.45
Frequency	Hz	50
Current draw	A	6.9
Suction inlet diameter	mm	80
Tank capacity	L.	45
Noise level	dB(A)	75
Dimensions	cm	70x62x252h
Weight	kg	60
Maximum vacuum	mmH2O	3200
Continuous waterlift	mmH2O	2600
Maximum air flow	m ³ /h	318
Motor Type		Three-phase Turbine
Primary filter		Star
Primary filter surface area	cm ²	30000
Primary filter diameter	mm	500
Primary filter media		Polyester
Filter class (IEC 60335-2-69) primary filter		L
Filter cleaning system		Manual
Discharge system		Flanged discharge ø150 with conveying cone
Pressure relief valve		Included



COPYRIGHT 2026 DELFIN S.R.L. ALL RIGHTS RESERVED
COPYRIGHT 2026 DELFIN S.R.L. ALL RIGHTS RESERVED

MACHINE CODE	DESCRIPTION
ASFIXE-001	AS FIXE WITH BALANCED FLAP DISCHARGE Ø150

All data mentioned in this document may change without notice. All data contained in this document is subject to change without notice.

DELFIN
FOR A DUST-FREE WORLD
www.delfinvacuums.com
delfin@delfinvacuums.it