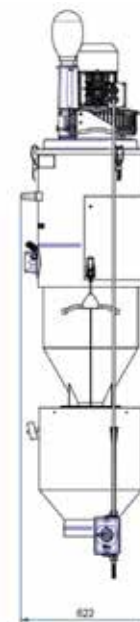
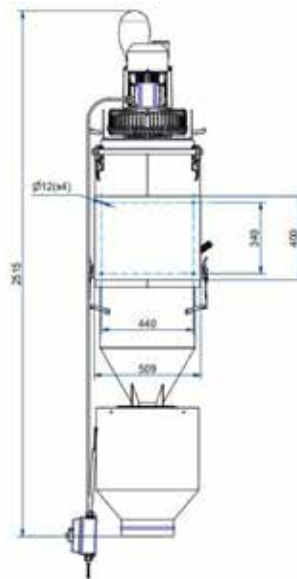


AS FIXE

WALL-MOUNTED INDUSTRIAL VACUUM CLEANER FOR LOCALIZED DISCHARGE



Filter category:



FEATURES

- Collection and localized discharge of material
- Mounted on the wall or on a steel structure (optional)
- Complete painted steel construction
- Manual filter cleaning system
- Localized discharge of material

All data mentioned in this document may change without notice. All data contained in this document is subject to change without notice.

DELFIN
FOR A DUST-FREE WORLD
www.delfinvacuums.com
delfin@delfinvacuums.it

TECHNICAL DATA

 OPTIONAL

| | | ASFIXE-002 |
|--|-------------------|--|
| Voltage | V | 400 |
| Power | kW | 3.45 |
| Frequency | Hz | 50 |
| Current draw | A | 6.9 |
| Suction inlet diameter | mm | 80 |
| Tank capacity | L. | 45 |
| Noise level | dB(A) | 75 |
| Dimensions | cm | 70x62x200h |
| Weight | kg | 60 |
| Maximum vacuum | mmH2O | 3200 |
| Continuous waterlift | mmH2O | 2600 |
| Maximum air flow | m ³ /h | 318 |
| Motor Type | | Three-phase Turbine |
| Primary filter | | Star |
| Primary filter surface area | cm ² | 30000 |
| Primary filter diameter | mm | 500 |
| Primary filter media | | Polyester |
| Filter class (IEC 60335-2-69) primary filter | | L |
| Filter cleaning system | | Manual |
| Discharge system | | Flanged discharge ø150 with conveying cone |



| MACHINE CODE | DESCRIPTION |
|--------------|---|
| ASFIXE-002 | AS FIXE WITH MANUAL SLIDING DAMPER Ø150/WITH MANUAL SLIDING DAMPER Ø150 |

All data mentioned in this document may change without notice. All data contained in this document is subject to change without notice.

COPYRIGHT 2026 DELFIN S.R.L. ALL RIGHTS RESERVED
COPYRIGHT 2026 DELFIN S.R.L. ALL RIGHTS RESERVED

DELFIN
FOR A DUST-FREE WORLD

www.delfinvacuums.com
delfin@delfinvacuums.it